



MEAD FAMILY CANCER CENTER PATH TO PROGRESS

Construction at the Mead Family Cancer Center continues to advance steadily as the project transitions further into interior work, while exterior progress moves toward completion.



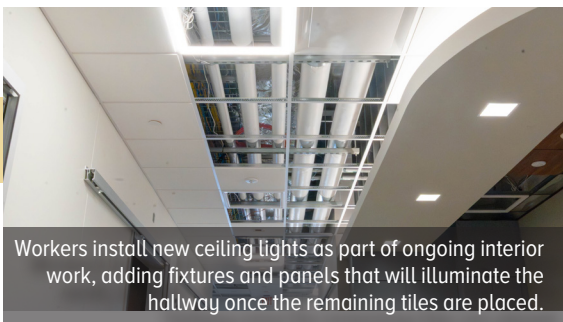
Crews work on the main entrance, installing the final glass panels and preparing the canopy for metal trim and finishing details.

Exterior progress

The front entrance is transforming quickly. Workers have installed the last of the glass, with the remaining opening reserved for automatic sliding doors. Crews are placing clips, covers and final trim before adding the doors.

Metal panels around the canopy and along the sides of the entrance are scheduled for installation toward the end of June. Once those are complete, soffit panels underneath the canopy will follow.

Dirt work on the west side of the building is underway as teams prepare for the final section of parking lot concrete. After pouring the parking area, crews will shift to grading around the rest of the building. Landscaping will begin once irrigation lines are installed, with sidewalks and planting expected to take shape later in the summer.



Workers install new ceiling lights as part of ongoing interior work, adding fixtures and panels that will illuminate the hallway once the remaining tiles are placed.

Interior construction

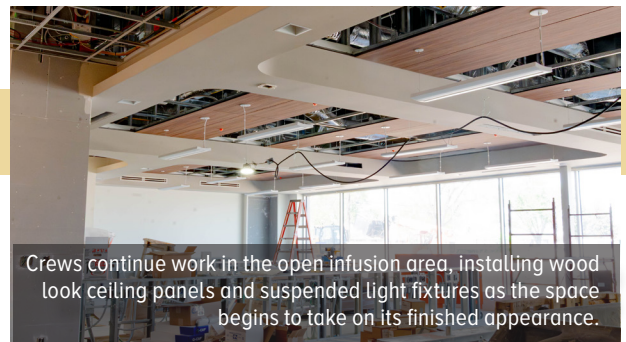
Activity inside the building is increasing as each zone reaches new milestones.

Zone 1: Zone 1 is bright and active; the lights are now on and ceiling tile installation is underway. Crews are placing border tile and any pieces that include devices. In the infusion area, soffits are painted and wood look ceiling tile is being installed above the nurse stations. Bathroom tile is grouted, and plumbing fixtures will be added once the grout cures. Countertop installation is scheduled to begin soon. Flooring and final plumbing fixtures will follow as this zone nears completion.

Zone 2: Zone 2 is moving quickly, and looks noticeably different with each visit. Casework is largely installed, the ceiling grid is in place and workers are adding lights and devices. The hot lab for positron emission tomography-computed tomography (PET CT) is framed and enclosed.

The vault has made significant progress, with drywall, soffits and paint underway. Project managers plan to begin flooring for zones 1 and 2 around the same time, with two crews working in parallel to finish both areas.

Zone 3: Zone 3 continues to take shape as drywall finishing, painting and ceiling grid installation progress. Devices, lights and casework will follow as each section is completed. Rooms with barn door frames will receive their doors after flooring is installed.



Crews continue work in the open infusion area, installing wood look ceiling panels and suspended light fixtures as the space begins to take on its finished appearance.

Building systems and finishes

Permanent electrical power is active in several areas, and more sections will come online as crews complete their work. Workers will bring air handling units and the chiller online as interior systems progress, allowing for temporary air conditioning. This step will support the start of flooring in zones 1 and 2.

Flooring will vary by room type. Exam rooms and utility spaces will receive sheet vinyl. Hallways will feature vinyl plank, while the lobby and bathrooms will have ceramic tile. Offices will be carpeted to create a comfortable work environment.

Emergency department tie-in

Structural steel tie in work is wrapping up, and metal framing will continue over the next few weeks. Once the area is fully enclosed, crews will begin mechanical, electrical and plumbing rough in, followed by drywall and glazing. This will allow tie in work inside the emergency department to begin.

The redesigned layout will shift the main entrance slightly south, creating a more direct path into the space. The expanded waiting area will improve flow for patients entering the emergency department or cancer center.



Crews removed a section of wall in the emergency department lobby, opening the space that will connect the main hospital campus with the new center.

Looking ahead

With glass installation, metal panel work, mechanical startup and flooring all progressing, the building is quickly shifting from a construction site into a warm, functional space. Each week brings more definition and detail as the project moves closer to completion.

To learn more or support the project, visit columbushosp.org.