



MEAD FAMILY CANCER CENTER PATH TO PROGRESS

Construction at the Mead Family Cancer Center continues to advance steadily as the project transitions further into interior work, while exterior progress moves toward completion.



Masonry continues along the other sides of the building, creating a cohesive and timeless look.

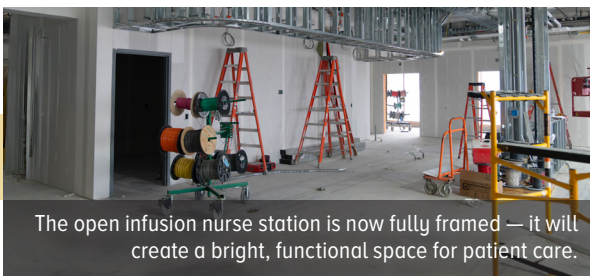
Exterior progress

Over the past month, masonry crews made significant progress around the building. Work on the west elevation is now complete, the north side is wrapping up, and crews have turned the corner onto the south side. Soon, the only remaining masonry will be at the south entry elevation. Framing, exterior sheathing and roofing are finished across nearly the entire building — a major milestone that keeps the structure protected and allows interior work to move ahead without weather impacts.

Spray foam insulation is progressing, and in the coming weeks the building will be fully insulated and sealed. Temporary heat is now in place, allowing interior temperatures to remain stable and comfortable for workers, while also providing ideal conditions for drywall finishing and curing.

Interior construction

Interior framing is complete, and drywall installation continues to move forward in phases. Drywall is concluded in Zone 1, where finishing work has begun. Installation is now underway in Zone 2 and progressing into Zone 3. As walls are closed in, interior spaces are becoming easier to visualize, and closer to their final form. All interior backing is complete, and in-wall mechanical, electrical and plumbing (MEP) rough-in work is on track to wrap up in the next few weeks.



The open infusion nurse station is now fully framed — it will create a bright, functional space for patient care.

Building systems and equipment

Mechanical and electrical systems continue to take shape. Equipment deliveries are ongoing, and generator delivery and installation are beginning soon. Rough-in work for air handlers and other mechanical equipment is progressing, with air handling unit startup targeted within the next two months.

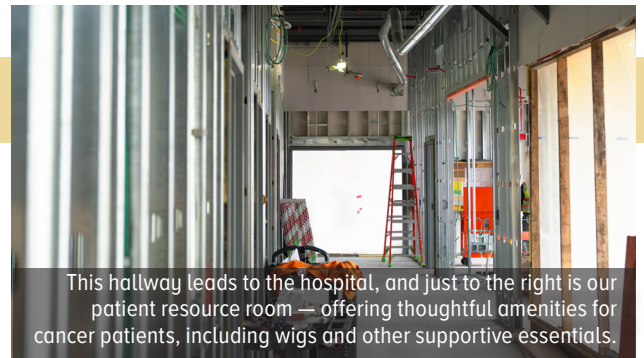


Drywall is up throughout most of the building and is nearly ready for paint. This brings the interior closer to its finished look and sets the stage for the next phase of construction.

Workers have installed the pneumatic tube system. This system will transport medications and supplies from the pharmacy and other hospital departments to nurse stations throughout the new building, improving efficiency and patient care operations.

Windows and exterior finishes

Crews have measured exterior window frames, and materials are expected to arrive in the coming weeks. Window framing will begin shortly after that, with glass installation anticipated approximately six weeks later. As these elements are installed, the exterior appearance of the cancer center will take shape.



This hallway leads to the hospital, and just to the right is our patient resource room — offering thoughtful amenities for cancer patients, including wigs and other supportive essentials.

Specialty space update: Linear accelerator suite

In the next few days, crews will begin installing the specialized duct shielding and lead-lined door for the linear accelerator (LINAC) treatment area. These components are critical to radiation protection and represent an important step forward in one of the most highly specialized spaces in the building. This work requires careful coordination and precision, and it marks a key milestone in preparing the suite for future equipment installation.

Looking ahead

Casework and cabinetry are expected to arrive in approximately six to seven weeks, bringing another visible step toward completion of interior spaces. With the building dried in and insulated and major systems advancing, the project continues to track well against the schedule.

In the months ahead, the Mead Family Cancer Center will transform into a welcoming, advanced space designed to support patients, families and care teams.

To learn more or support the project, visit columbushosp.org.